



The ALICE Journey

Transforming your construction business with the world's first AI-powered construction simulation and optimization platform.

2021



Table of Contents

**What is Alice?
An overview**

01

**Areas of
focus**

02

**Explore ALICE
products**

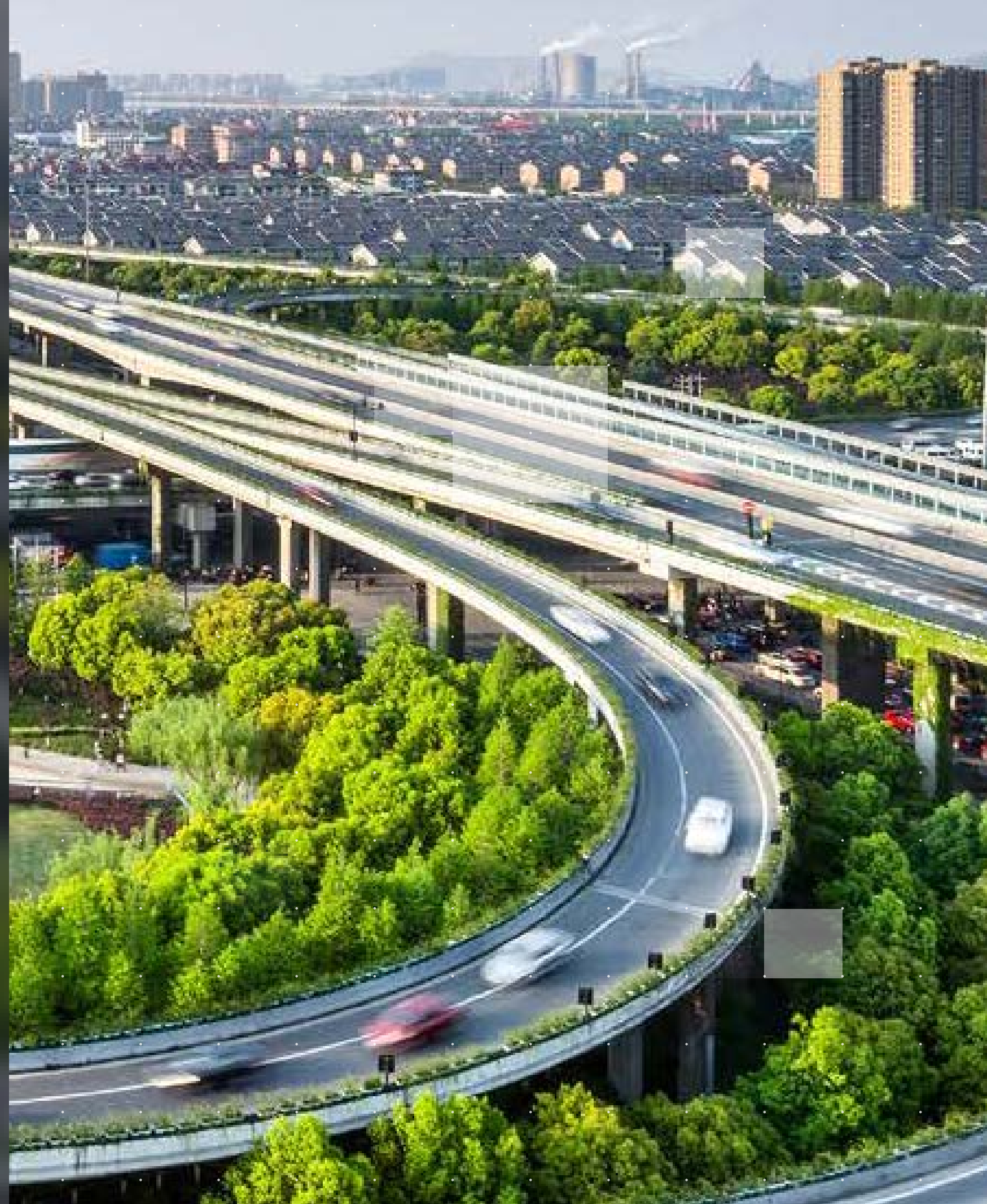
03

What is Alice? An overview

01



The ALICE Journey



What is Alice?

ALICE stands for:

Artificial

Intelligence

Construction

Engineering






but what does ALICE do, and how can it help you?

ALICE is the first AI-powered simulation and optimization platform for construction planning and scheduling. Our solution enables contractors and owners to plan, bid, and build more effectively, reducing construction duration by an average of 17% and labor costs by \$30 million for a typical \$500 million construction project.

ALICE helps contractors manage risk and select the best strategy and schedule for their project, empowering them to bid with confidence, knowing that they have modeled for all major contingencies and that their proposal is not only constructible, but also optimized to their own goals.

Working in ALICE is fast and easy. Simply upload a 3D model, if you have one, or just a precedence diagram if you don't, then break down your scope, input your construction methods, cost information and add any additional constraints. Once your plan is set, in just 10 minutes, ALICE will generate a multitude of valid resource-loaded solutions for building your project and optimizing your resources, all of which can be fully exported to P6 or any number of data visualization tools.

ALICE serves as a decision making engine and helps teams with questions that would otherwise be too time-consuming to answer, allowing them to forecast and mitigate risk at each stage of the construction lifecycle.

-  **How can I build it fastest at the lowest cost?**
-  **What is the best sequence of work?**
-  **How much heavy equipment do I need?**
-  **Should I close down two lanes or four lanes?**
-  **How do I recover from unforeseen conditions?**

With ALICE you get quantifiable answers, giving you the confidence that your plan is the best plan, and helping you build trust with your clients.

How ALICE Solves the Industry's Challenges

☑ **BIM-friendly**

New users can have a buildable schedule within 2-3 hours from uploading their first 3D model into ALICE. The engine automatically outputs a 4D model that visualizes that schedule, informing all project participants that work needs to occur, where and when. No BIM? No Problem; ALICE also works with simple block diagrams.

☑ **Generative**

ALICE augments the capabilities of the user—the engine does the heavy work of performing the calculations required to generate millions of scheduling options.

☑ **Parametric**

Rescheduling is achieved simply by changing parameters such as number of crews, overtime, number/types of cranes, sequencing, and pressing “re-schedule.”

☑ **Recipe-Based**

Tell ALICE how to build an element such as a column and that information is automatically applied to all columns in a project. This enables schedules to be generated quickly, typically in a few minutes. Furthermore, recipes are remembered by ALICE allowing them to be reused on the next project.

How the Innovations Benefit Project Management and Scheduling

ALICE gives construction teams a powerful tool to meet scheduling and planning changes. Easily run several scheduling options to test what assumptions made by the team are correct and which can be improved. Assumptions made by each Scheduler are explicit and easy to see, even 6 months after a schedule is created by anyone looking at it.



On average, **ALICE reduces construction durations** by 17% and labor costs by 14%.



Easy to learn: users can be trained on ALICE in as little as 1 day.



Easy to deploy: a few days to setup any size project, any complexity, and any phase.

“Anyone can become an ALICE expert in half a day.”

Ifan Williams,

Senior Projects Control Scheduling Manager at Parsons

Metrics That Matter

ALICE helps you determine the optimal manpower and resource mix, which in turn decreases costs and drives margins up across all projects.

Used in the bidding phase, ALICE helps you win more business by producing AI-powered bid schedules.

☑ **17% Faster**

Finish faster to cut costs — save or redeploy resources to projects.

☑ **14% Labor Costs**

Savings in labor for self-perform jobs.

☑ **14% Additional Capacity**

Start another project sooner — build more in same amount of time.

☑ **12% Equipment Costs**

Reduction in heavy equipment costs.

☑ **10% Overhead Costs**

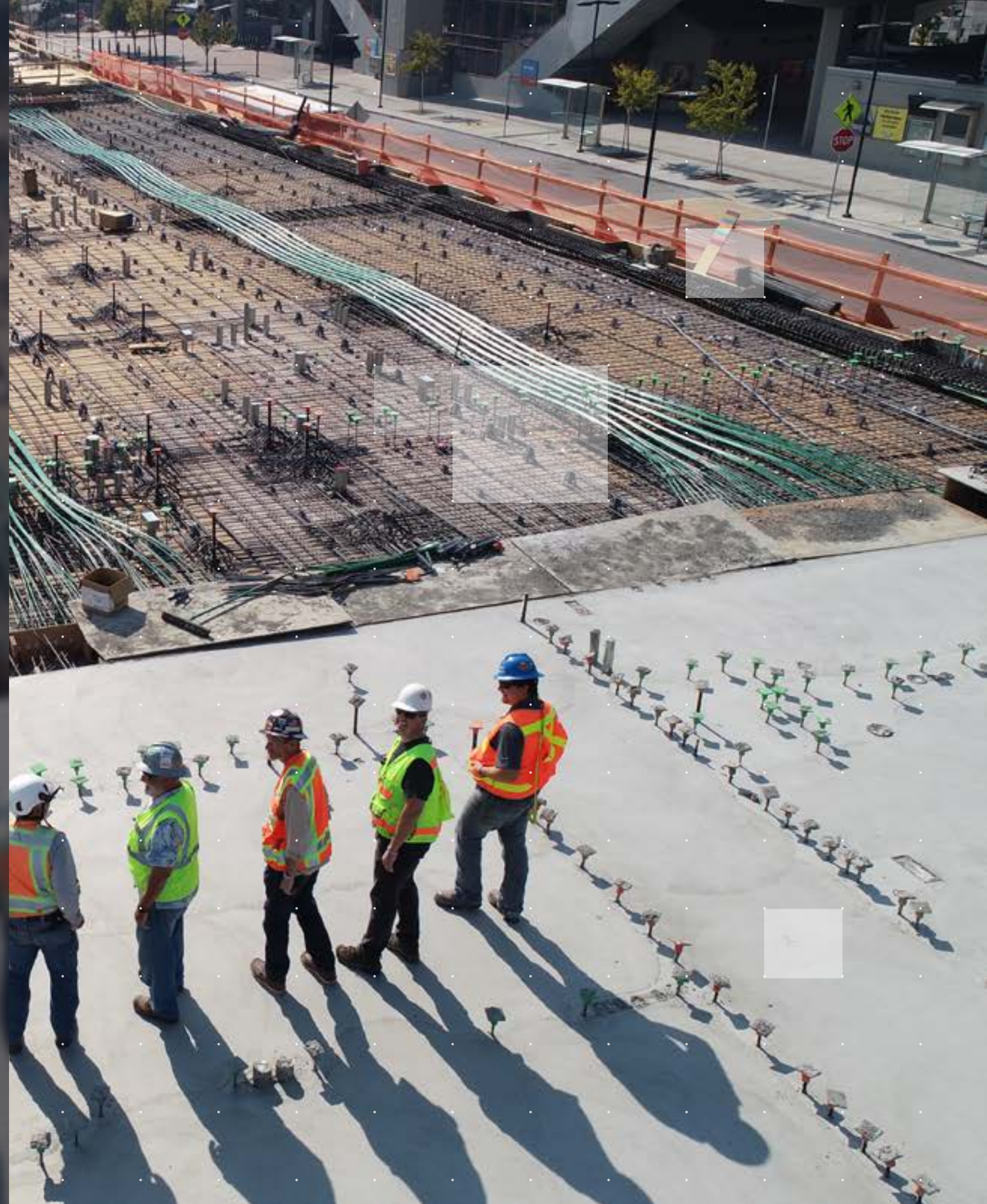
General conditions, staffing, insurance, facilities, interest & financing.

Areas of
focus

02



The ALICE Journey



Areas of focus

Over \$15 billion worth of projects have been optimized by ALICE across all sectors and on all continents.

Backed by the top VCs in Construction Tech:



FOUNDAMENTAL



Merus Capital.

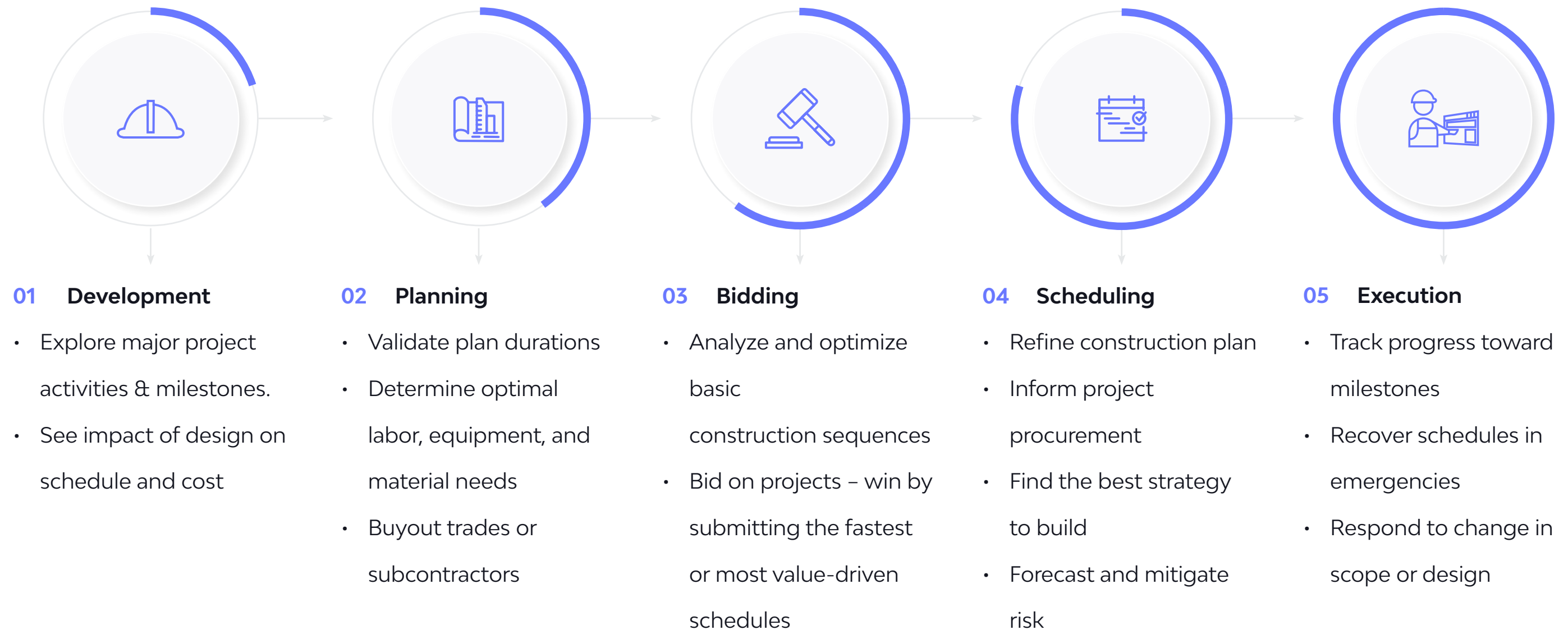


Infrastructure

Industrial

General Building

Impact at every phase of the project.



It's not AI, Artificial Intelligence, but IA, Intelligence Augmentation.

ALICE Brings your teams together. Our Mission is to accelerate the construction industry's digital transformation.



The Human

- Planning - is done by the human.
- The human's job is to define the objectives, ask ALICE questions, analyze results, glean insights, explore What-If scenarios – all to make data-driven decisions to optimize or execute a project.



ALICE

- Scheduling - crunching constraints - is done by the machine.
- ALICE generates millions of sequences and scenarios to help you find the best strategy to meet your objectives.
- Ensures availability of resources and validity of constraints.
- ALICE automatically produces Gantt charts and 4D/5D schedules — Scope, Cost, and Time are integrated.



The Project Team

- Your team's time is spent collaborating, planning, and strategizing on best product execution.
- Your team no longer spends time trying to push out Gantt charts or schedules that only present one option to build a project.
- Team time is focused on maximizing the project's profitability or to achieve the project's specific goals.

Explore ALICE
products

03



The ALICE Journey



Explore ALICE Products



ALICE Preconstruction

Generate and explore a multitude of valid resource-loaded solutions for building your project and optimizing your resources, all of which can be fully exported to P6.

Easily simulate 'what if' scenarios and quantify the impact of potential decision. Bid more confidently, by ensuring that your plan is the most efficient plan.



ALICE Manage

Unleash the power of ALICE during the construction phase to schedule around any delays and get back on track.

Visualize progress, catch delays and immediately explore alternative solutions to minimize the impacts on your project.

	ALICE Preconstruction	ALICE Manage
Plan		
Constraint Modelling	✓	✓
Explore		
What if	✓	✓
Advanced Optimization	✓	✓
Analyze		
Gantt	✓	✓
4D	✓	✓
Analytics	✓	✓
Exports	✓	✓
Manage		
As-built schedule		✓
Progress tracking		✓
Reschedule/Resequence		✓
Progress Analytics		✓
Progress exports		✓
Version control	✓	✓

Stand Out and Impress Owners

Today's Owners demand increased value-add and differentiation. In order to win the most strategic and complex projects, contractors need to stand out and be able to justify why their plan is the best. ALICE's AI empowers contractors to bid with confidence, allowing them to model all the major contingencies, assess the constructibility of the bid schedule and ultimately reduce risk. During construction, ALICE enables rapid recovery by quickly resequencing around delays.

ALICE helps you prove to the Owner why you will execute the project with the best plan and strategy, and with the lowest risk.



"ALICE is transparent, it builds trust, it builds our relationship and allows us to show how and why we're going to get a project done in a time and cost effective manner."

Mike Macbean,
Preconstruction Director and Build Group

Your Partners Through Change

Deploying new technology on a project doesn't have to be daunting. Let us guide you.

We are more than a technology vendor. We are a team of construction professionals, professors, schedulers & builders who have worked on the most challenging construction projects on the planet.

Your teams are in expert hands.

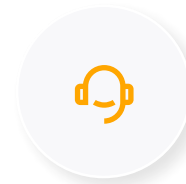
While our platform is powered by AI, there's nothing artificial about our team.

Our Implementation and Customer Success Managers are experts in project management, estimating, scheduling and BIM. They've helped the top GCs and Owners to manage and optimize over \$15B in construction volume on the ALICE platform. No construction problem is too complex for them to solve with you.

What to expect during your ALICE engagement

Just like a well-planned project is a PM's best friend, so is a well-planned deployment of new construction technology. Your engagement team is committed to your project's success through:

- ☑ Early alignment around key business objectives
- ☑ The ALICE Method: A gradual onboarding program
- ☑ Establishing steering committees & QBRs (Quarterly Business Reviews) to ensure goals are met and value is delivered



Customer Success Team
on-call 24/7



Helpdesk requests are
answered within 2 hours



Custom training workshops
led by industry experts



ALICE Technologies is the world's first AI-powered construction simulation platform. Founded in 2015 based on research from Stanford University, ALICE leverages artificial intelligence to analyze a project's complex building requirements and generate highly efficient building schedules.

ALICE enables contractors and owners to plan, bid, and build more effectively, reducing construction times and labor costs by \$30 million for a typical \$500 million construction project. ALICE Technologies works with construction leaders in the infrastructure, industrial, and commercial construction segments, such as Parsons, HDCC, and Kajima Corporation.

Contact us today:

 833-254-2383

 info@alicetechnologies.com

 www.alicetechnologies.com